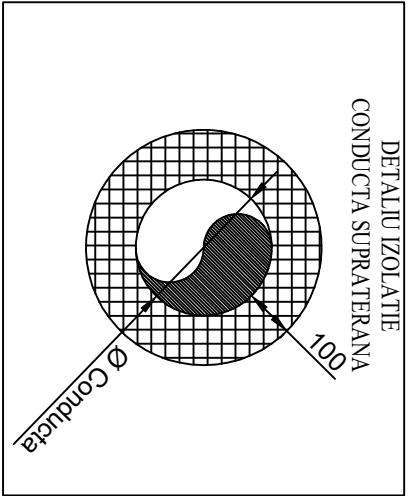
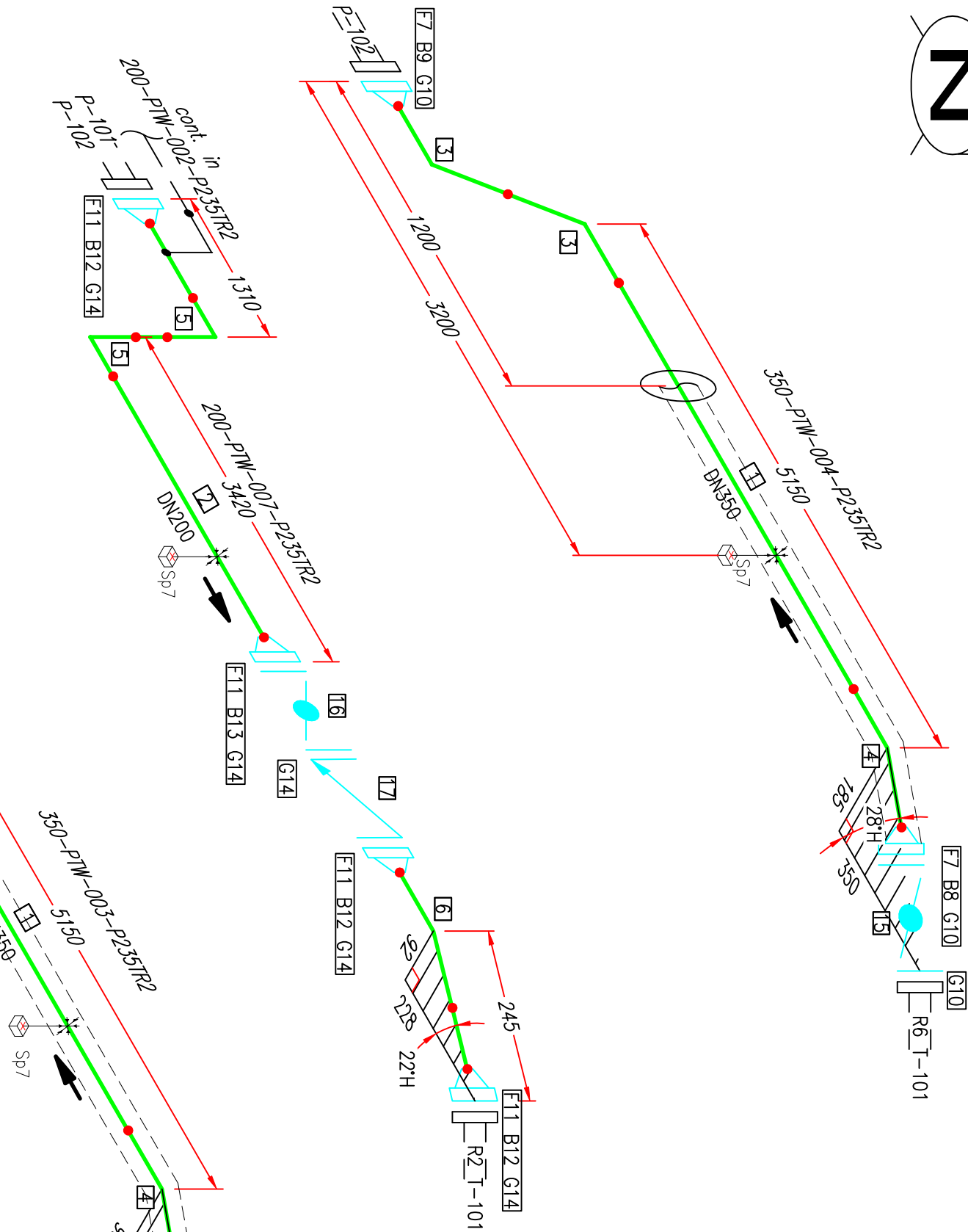




BILL OF MATERIALS			DESCRIPTION
ID	QTY	ND	
1	9.3M	350	TEAVA FARA SUDURA, P235TR2, EN 10216-5, Ø355.6x10
2	4M	200	TEAVA FARA SUDURA, P235TR2, EN 10216-5, Ø219.1x8
3	4	350	COT 45°, 3D, P235TR2, EN 10253-2, Ø355.6x10
4	2	350	COT 45°, 3D, P235TR2, EN 10253-2, Ø355.6x10 (trimmed)
5	2	200	COT 90°, 3D, P235TR2, EN 10253-2, Ø219.1x8
6	1	200	COT 45°, 3D, P235TR2, EN 10253-2, Ø219.1x8 (trimmed)
7	4	350	FLANSA CU GAT, P235GH, Tip11, B1, PN16, SR EN 1092-1
8	32	M24X210	PREZON FILETAT+2 PIULITE, 21CrMoV5-7/25CrMo4
9	16	M24X125	PREZON FILETAT+2 PIULITE, 21CrMoV5-7/25CrMo4
10	6	350	GARNITURA SPIROMETALCA, PN16, B1, Tip GS/IE, Gr 4,7
11	4	200	FLANSA CU GAT, P235GH, Tip11, B1, PN16, SR EN 1092-1
12	36	M20X105	PREZON FILETAT+2 PIULITE, 21CrMoV5-7/25CrMo4
13	12	M20X154	PREZON FILETAT+2 PIULITE, 21CrMoV5-7/25CrMo4
14	5	200	GARNITURA SPIROMETALCA, PN16, B1, Tip GS/IE, Gr 4,7
15	2	350	ROBINET FLUTURE, PN16, B1, EN 1074-1
16	1	200	ROBINET FLUTURE, PN16, B1, EN 1074-1
17	1	200	ROBINET DE SENS, PN16, B1, EN 558



00	09.09.2022		Emit pentru comentarii
Rev.	Data	Modificare ceruta de:	Descriere modificare

-	-	-	-
Verificator/ Expert	Nume/ Name	Semnatura/ Signature	Cerinta/ Requirement
Proiectant general/General Designer <b>ROENGG CONSULTING SRL</b> RO 24611389 / 0344 806 979 / contact@roengg.com		 <b>ROENGG TÜV</b> AUSTRIA 2010021001798	Referativ/ Expertiza Nr. / Data/ Reference/ Expertise No./ Date
Proiectant de specialitate/ Specialist Designer			
-	-	-	-
	Nume / Name	Semnatura / Signature	Scara / Scale :
Proiectat / Designed	A.N.		N/A
Verificat / Checked	R.M.		Data / Date :
Aprobat / Approved	S.D.		09.09.2022
		Nr. Desen / Drawing No.	10532021-RNG-DTDS-PIP-ISO-004_00_RO
		Faza / Project Phase:	DTDS
		Nr. pag. / Page No.:	1/1

